



Georgia Urban Forestry Council Presentation

JIA Landscape and Planning
Department



Jekyll Island Revitalization

Large-scale tree Preservation



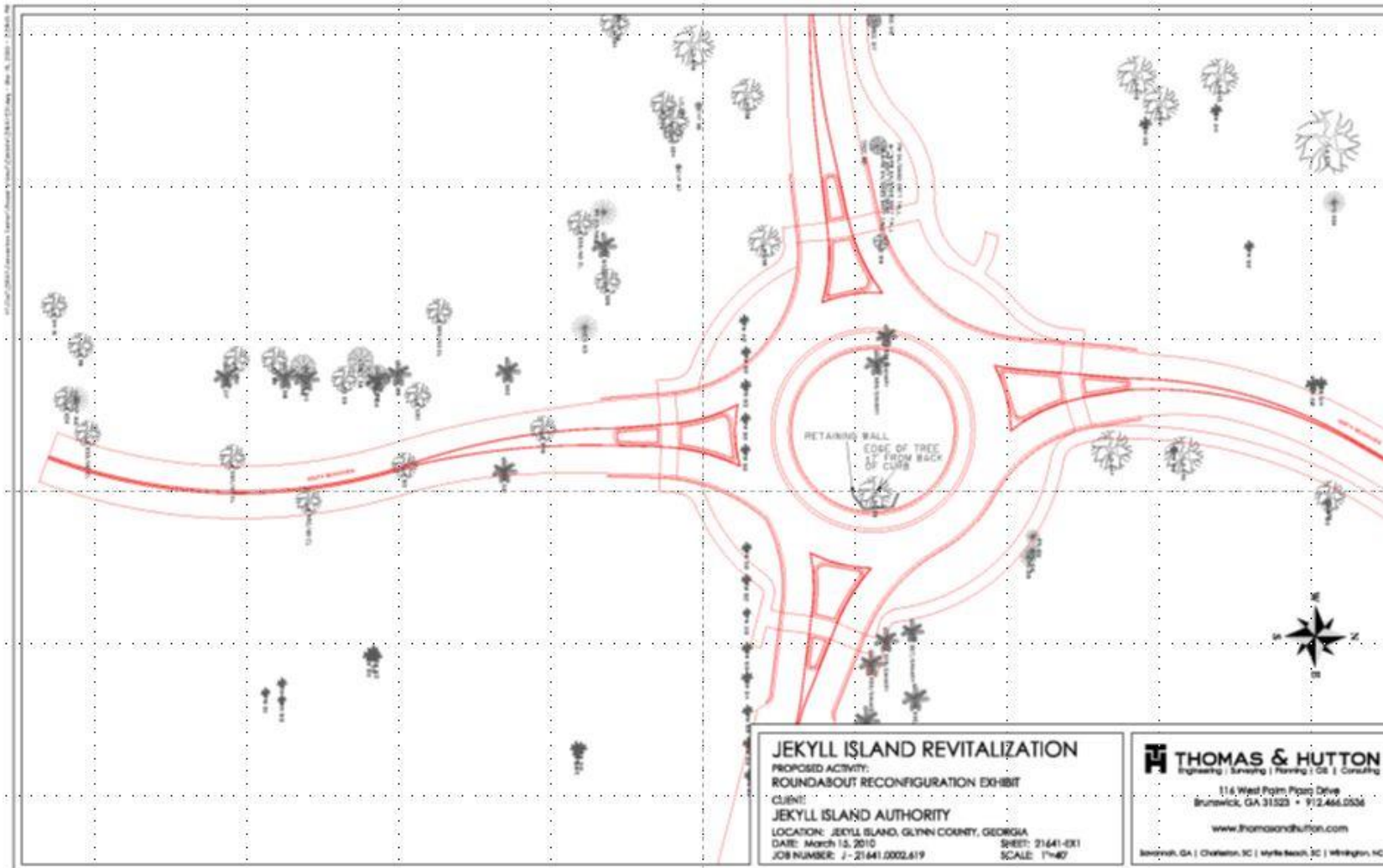
Ca. 2010, Initial Beach Village Master Plan strove to save or relocate as many trees as possible within the footprint of the Jekyll Island Beach Village. The existing Roundabout Tree was considered the iconic tree of this entire effort. It ultimately earned the name

“Mother Earth Tree”



Jekyll Island Revitalization

Mother Earth Tree-Initial Roundabout Design



- **HCP Architects of Orlando served as the lead of the Design Team**
- **Gladding Jackson of Orlando/ Landscape Architects**
- **Thomas & Hutton of Brunswick/ Civil Eng.**
- ***Arboguard Tree Specialists of Avondale Estates served as the consultant arborist- David Dechant. Hired after Project broke ground**



Jekyll Island Revitalization

Mother Earth Tree- Revised & Final Roundabout Design





Jekyll Island Revitalization

Mother Earth Tree- Prior to Revitalization:





Jekyll Island Revitalization

Mother Earth Tree- Demolition Phase





Jekyll Island Revitalization

Large-scale tree Preservation





Jekyll Island Revitalization

Large-scale tree Relocation



- **Ex. Windswept live oaks 11"-18" dbh.**
- **Originally planted as 4" dbh trees in 1990 from Shady Grove Nursery**
- **Realignment of the adapted canopy proved critical for final relocation.**
- **All live oaks relocated by SRG & 2 yr after-care program by Arborguard & consultant arborist**



Jekyll Island Revitalization

Large-scale tree Relocation/Staging



- **Some trees were transplanted in Great Dunes Park**
- **11 live oaks up to 18” dbh were placed in custom wood planters & relocated near Camp Jekyll**
- **Custom back fill used in ea. Container and micro spray irrigation**



Jekyll Island Revitalization

Large-scale tree Final Relocation





Jekyll Island Revitalization

Large-scale tree Harvesting



- **Trees initially balled and bur lapped with wire fencing as a basket added.**
- **Root balls sized at 9” in dia. For every 1” dbh.**
- **Steel cable pulled underneath root ball to cut roots underneath.**
- **Steel pipes pushed underneath root ball followed by steel sled pushed underneath root ball/ tree.**



Jekyll Island Revitalization

Large-scale tree Preservation- Relocation Process In Action





Jekyll Island Revitalization

Large-scale tree Preservation/Relocation



This was the third largest slider live oak moved. It was a 20" dbh tree with a tall and narrow upper canopy.

It now resides just east of the Circle K/Dairy Queen next to overflow parking.



Jekyll Island Revitalization

Large-scale tree Preservation/Relocation



Three additional live oaks were relocated along the north side of the parkway.

All three trees were 16"-18" –dbh at the time they were relocated.



Jekyll Island Revitalization

Large-scale tree Preservation/final location?





Jekyll Island Revitalization

Large-scale tree Preservation/Relocation



- **A total of 40 mature live oaks were relocated of which 38 survived the move**
- **The two that died were planted in the opposite direction of how they were originally windswept**



Jekyll Island Revitalization

Cabbage Palm Relocation



Approximately 180 cabbage palms were salvaged & relocated along the parkway, Beachview Drive and within the Historic District;

They were initially stored on make-shift palm racks w/ irrigation at the Waste Water Treatment Plant



Jekyll Island Revitalization

Cabbage Palm Relocation Old Plantation Allee





Jekyll Island Revitalization

Canary Island Date Palm Relocations



14 Canary Island Date Palms relocated w/ 90” Big John Spade @ \$400. ea.



Jekyll Island Revitalization

Canary Island Date Palm Relocations





Jekyll Island Revitalization

Existing Tree Impacts



- **Avoiding impacts in the critical root zone was a priority**
- **Where this was unavoidable, we elected to build up built elements above the critical root zone**



Jekyll Island Revitalization

Crepe Myrtle Relocation



- **Relocation performed with a 45” pull behind tree spade at \$50.00 per tree**
- **12- multi-leader crepe myrtles relocated on the island.**
- **This was the most cost-effective relocation effort and no trees lost despite the small size of the root balls.**



Jekyll Island Revitalization

Official Recognition of Project



- **In the fall of 2013, Arborguard was awarded by GUFC the “Outstanding Urban Arboriculture Grand Award” at their annual conference in Columbus, GA.**
- **Working in partnership with a qualified certified arborist was what made this project a success.**



Jekyll Island Revitalization

Closing Remarks for Large-scale tree Preservation



- **Actual age, unknown?
Approx. 350 yrs +?**
- **133” dbh**
- **145’ avg. overall width**
- **FAA wanted it cut down as an obstruction to the airport. This would equal \$160k in fines per tree ordinance.**
- **The best way to preserve a tree is to leave it ALONE!!!**