



East Georgia
STATE COLLEGE[®]



GYSTC 
GEORGIA YOUTH SCIENCE & TECHNOLOGY CENTERS



Service Learning Projects



Outline

- East Georgia State College
- Service Learning Projects for the Tree Campus Higher Education:
 - Tree Identification Workshops
 - Moon Tree
 - Lessons learned

East Georgia State College

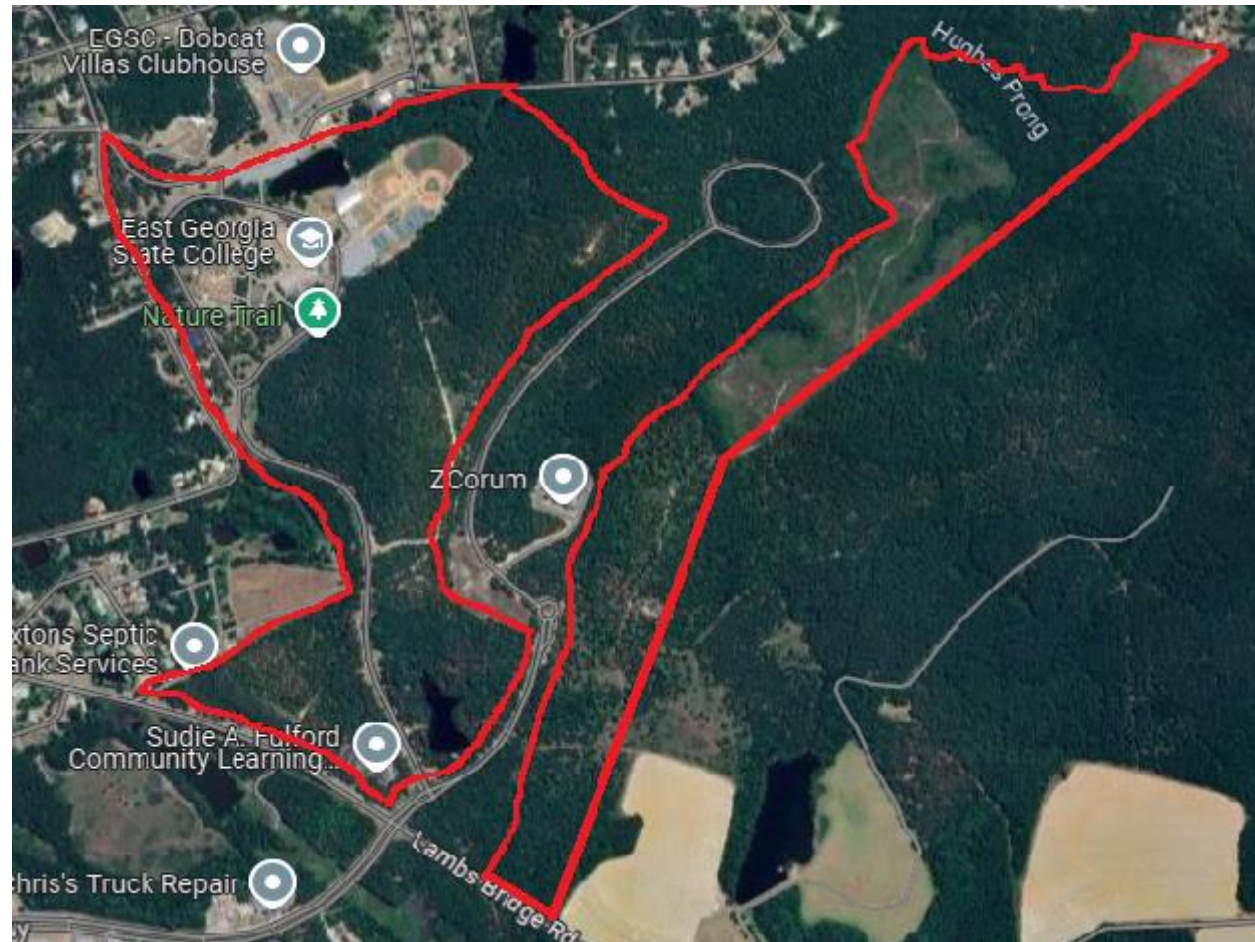
- East Georgia State College:
 - University System of Georgia
 - Established in 1973
 - 3 campuses:
 - Main campus: Swainsboro (Emanuel County)
 - Statesboro campus (1997)
 - Augusta campus (2013)

East Georgia State College

- East Georgia State College: Swainsboro campus

385-acre pine forest

65% tree canopy



East Georgia State College

- East Georgia State College: Swainsboro campus

Campus: 41% tree canopy



- Tree Campus Higher Education since 2017:
Shawn Diddie from the Georgia Forestry Commission
- 5 standards:
 - Establishment of a campus tree advisory committee
 - Evidence of a campus tree care plan
 - Verification of the plan's dedicated annual expenditures
 - Observing Arbor Day
 - **Creating a service-learning project aimed at engaging the student body**

Service Learning Projects

- Service Learning Projects since 2017:
 - 2017: Activities for elementary students
 - 2018: Tree identification workshops
 - 2019: Tree donation and awareness in high and middle schools
 - 2020: Virtual tree planting tutorial
 - 2021: Native trees awareness and education during the Swainsboro Pine Tree Festival
 - 2022: Native trees awareness and education during the Swainsboro Pine Tree Festival
 - 2023: Native trees awareness and education during the Swainsboro Pine Tree Festival
 - 2024: Moon tree celebration

Service Learning Projects

- Tree Identification Workshops:



EGSC WELCOMES YOU TREE IDENTIFICATION

Learn How to Identify Trees

Mark McClellan - Regional Specialist, Georgia Forestry Commission

Monday • March 19, 2018

12 PM • C115 (Academic Building Expansion)

Tree Identification

David Chevalier - EGSC Chair of the Biology Department

Saturday • March 31, 2018

10 AM • In front of the EGSC Gym

Results of the Tree Identification

Mark McClellan - Regional Specialist, Georgia Forestry Commission

Monday • April 23, 2018

12 PM • C115 (Academic Building Expansion)



- Founded in 1989
- Operated by Kennesaw State University
- Is a Private, Non-Profit educational organization designed to increase interest and enthusiasm in STEM subjects typically in underserved areas of the state in grades K-8

1. Central GYSTC

Located at: Mercer University

2. Chattoochee-Flint GYSTC

Located at: Georgia Southwestern State University

3. Etowah GYSTC

Located at: Georgia Highlands College

4. Gordon GYSTC

Located at: Gordon State College

5. Magnolia Midlands GYSTC

Located at: East Georgia State College

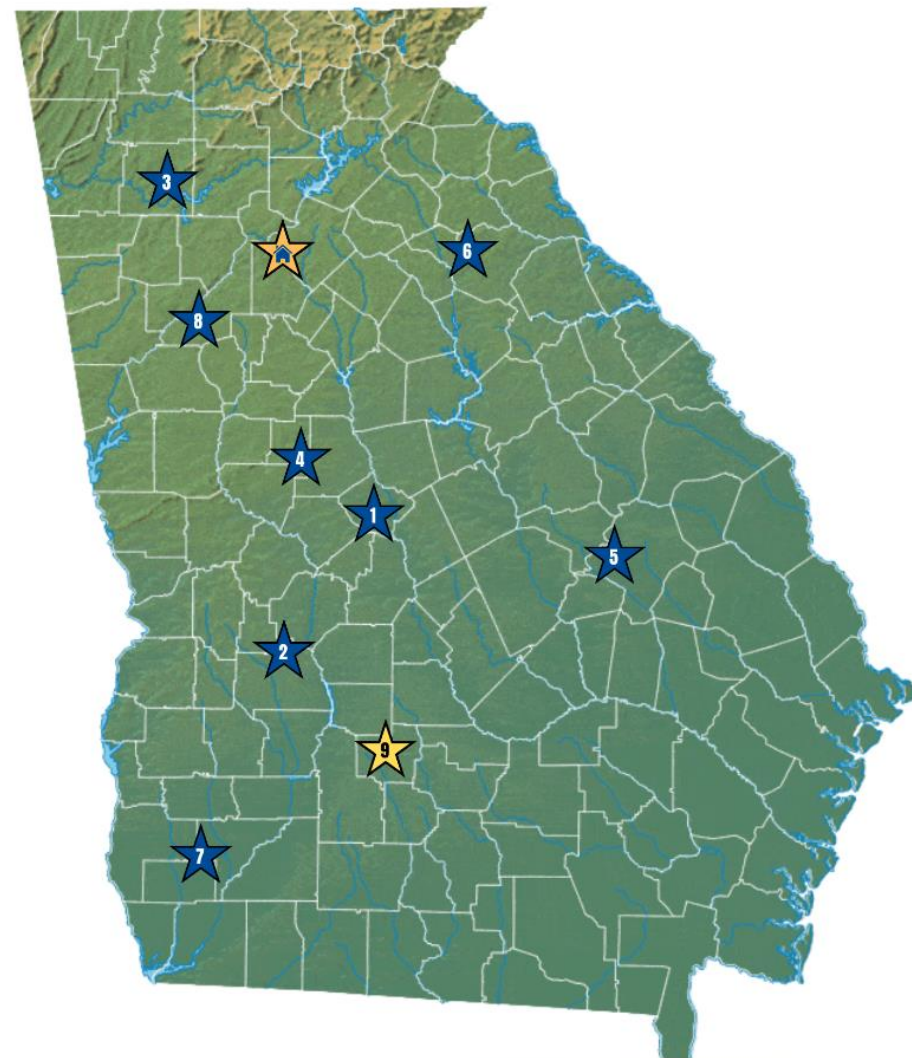
6. Oconee River GYSTC

Located at: Northeast Georgia RESA

7. Southwest GYSTC

Located at: ABAC at Bainbridge
Southern Regional Technical College

8. West GYSTC



- Founded in 1997
- Located at East Georgia State College at the Fulford Center
- Served 6,166 students and 544 teachers in the 2023-2024 school year

Member Systems: Emanuel, Candler, Jefferson, Baldwin, and McIntosh Counties



STEM Education

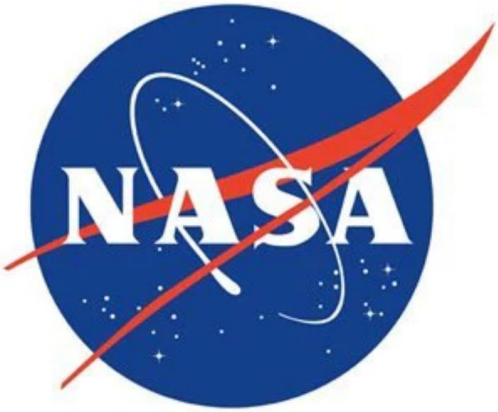


- STEM Nights
- STEM Days
- In-Class Activities
- Professional Development
- Summer Camps
- Campus Visits
- Kits and Resources for Teacher Check-Out



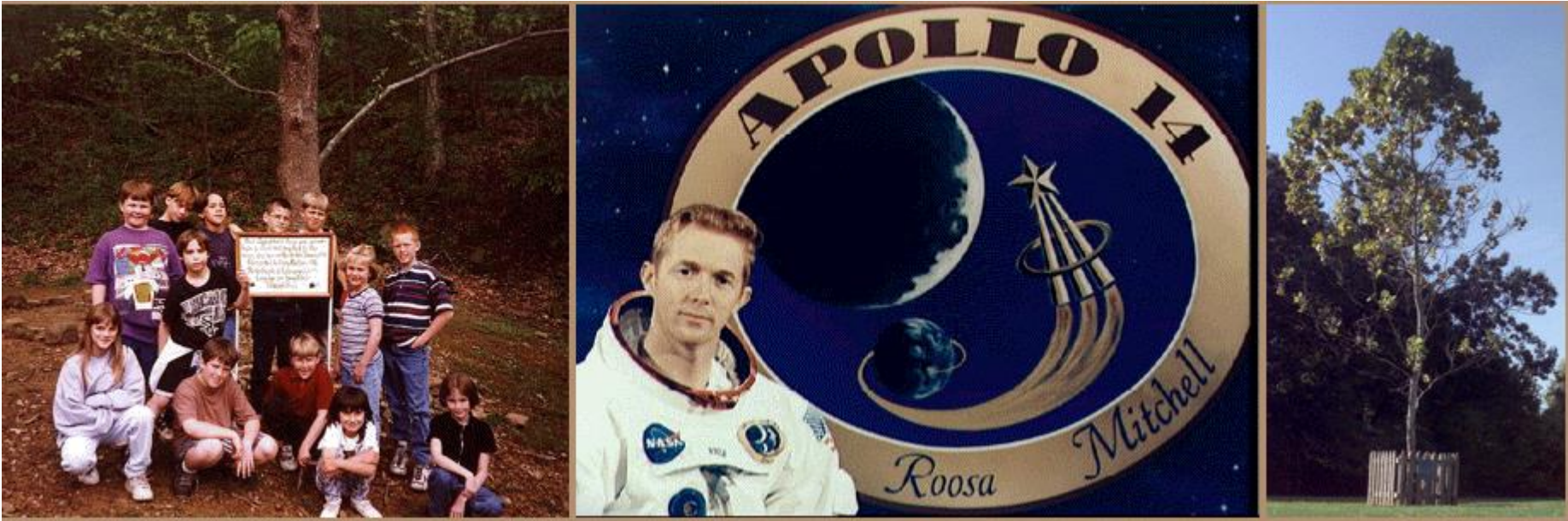
Moon Tree

Planted May 7, 2024



Moon Tree History

On January 31, 1971, NASA astronaut Stuart Roosa, the command module pilot for the Apollo 14 mission and a former U.S. Department of Agriculture Forest Services smoke jumper, carried tree seeds into lunar orbit. The Apollo 14 Moon Trees were grown into seedlings by the U.S. Department of Agriculture Forest Services and eventually disseminated to national monuments and dignitaries around the world, with a large number distributed as part of the nation's bicentennial event.



Moon Tree



In a nod to the legacy of Apollo 14, and a celebration of the future of space exploration with NASA's Artemis Program, a "New generation" of Moon Tree seeds traveled into lunar orbit aboard the Orion spacecraft in 2022. The seeds travelled about 270,000 miles and spent about 4 weeks in space before returning to Earth.

The tree seeds were germinated under the care of the USDA (United States Department of Agriculture) Forest Service.

Moon Tree Planting



Moon Tree Planting



Service Learning Project



- Over 90 students at camp from 1st-6th grades

Moon Tree Party

- Over 100 guests
- Tree Campus Committee Members volunteered
- College student volunteered



Moon Tree Party



Moon Tree Party



THE MOON TREE



Home » About » Fulford Center & Planetarium » The Moon Tree



FULFORD CENTER & PLANETARIUM

- About the Center
- Newsletter
- Planetarium
- Magnolia Midlands Georgia Youth Science & Technology Center
- The Moon Tree
- 10th Anniversary Celebration
- Fulford Center Virtual Tour
- Schedule An Event
- Directions
- Contact Us

Service Learning Projects

- Lessons Learned:
 - Community participation: involve a local teacher / school
 - College student participation: challenging
 - Use local resources: East Georgia State College Bee Campus, GYSTC, and Georgia Forestry Commission
 - Keep it simple but focused one 1 or 2 objectives
 - Not required to change project every year
 - Have a back up project

Acknowledgments



Georgia Forestry Commission

- Shawn Diddie
- Mark McClellan
- Alex Ballard
- Robert Seamans Jr
- Seth Hawkins / Matthew O'Connor / Doug Claxton
- Samuel Smith

East Georgia State College Tree Advisory Committee

- David Chevalier
- Paul Cerpovicz
- Desmal Purcell
- James Beal
- David Steptoe
- Erin Youmans
- Kate Moore
- Harley Smith
- Cheryl Goodman
- Samuel Smith
- Brianna Wilder

Magnolia Midlands Georgia Youth Science & Technology Centers

- Amanda Buice
- Kenny Griffin
- Meeks Farms and Nursery, Inc.
- Malanie Freeman