

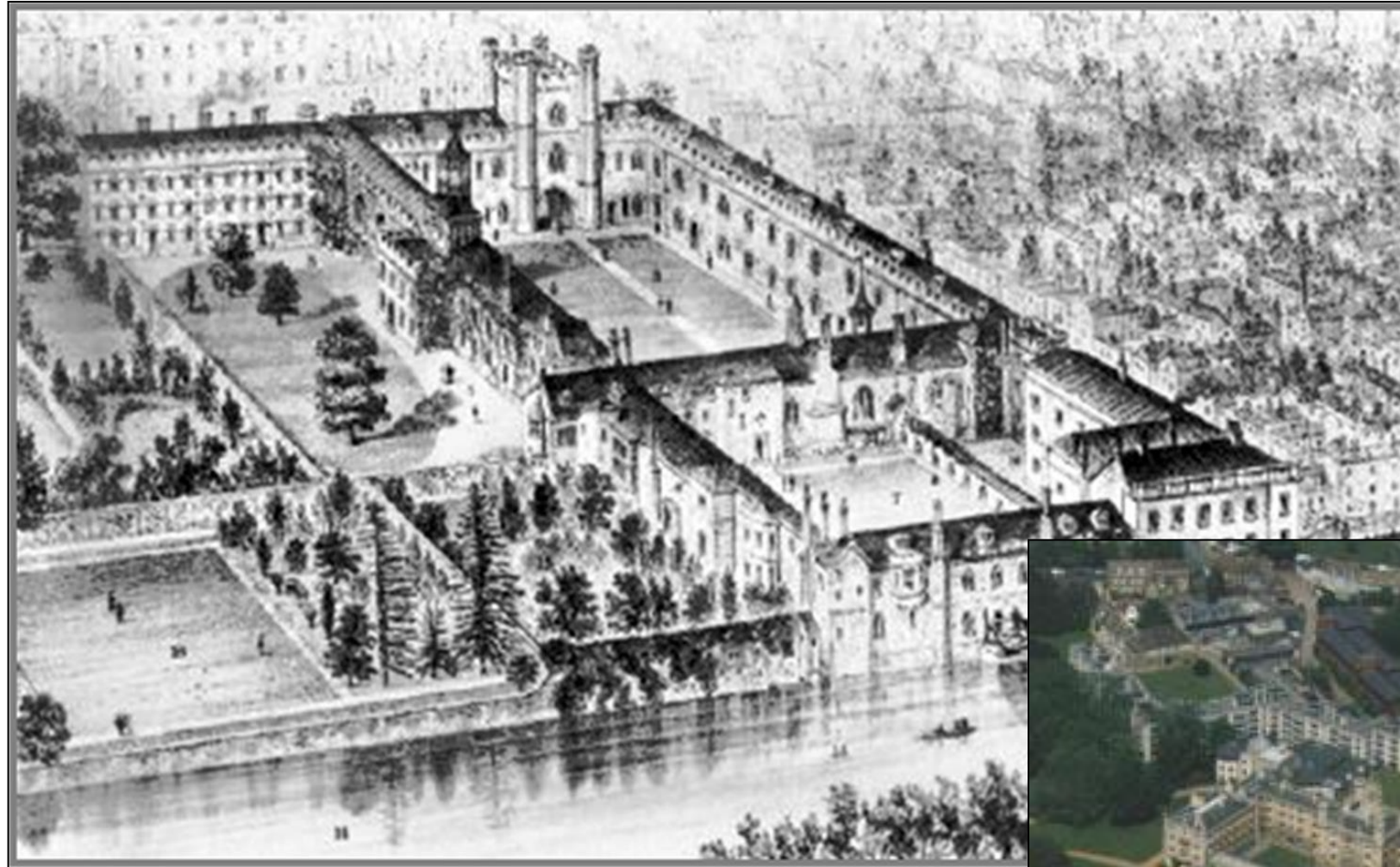


D.W. Brooks Pedestrian Mall



GREENING OF THE CAMPUS

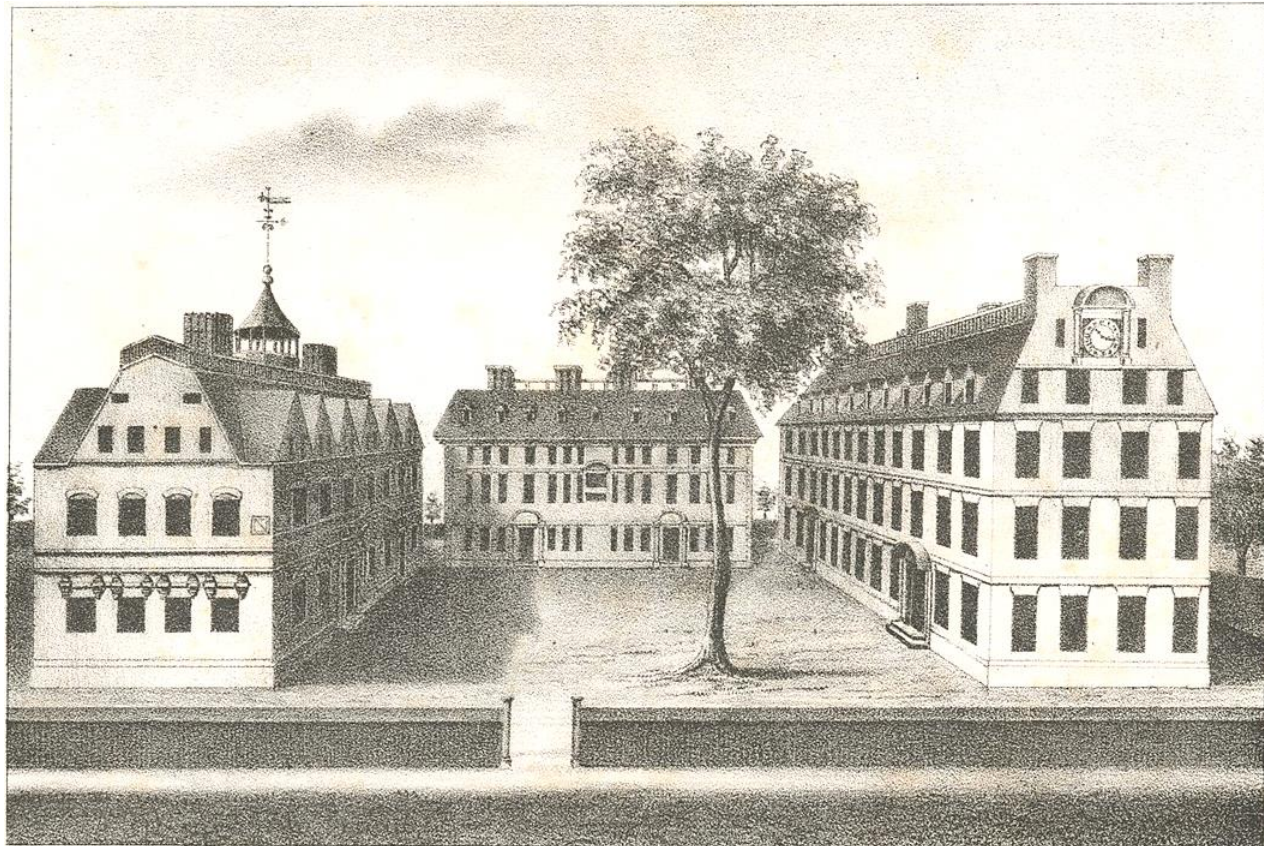
ORIGINS



The four-squared cloister reinforced the mission of work, prayer, and isolation from outside influences

*-Cambridge University
- UGA Archives*

ORIGINS



Harvard College, 1636



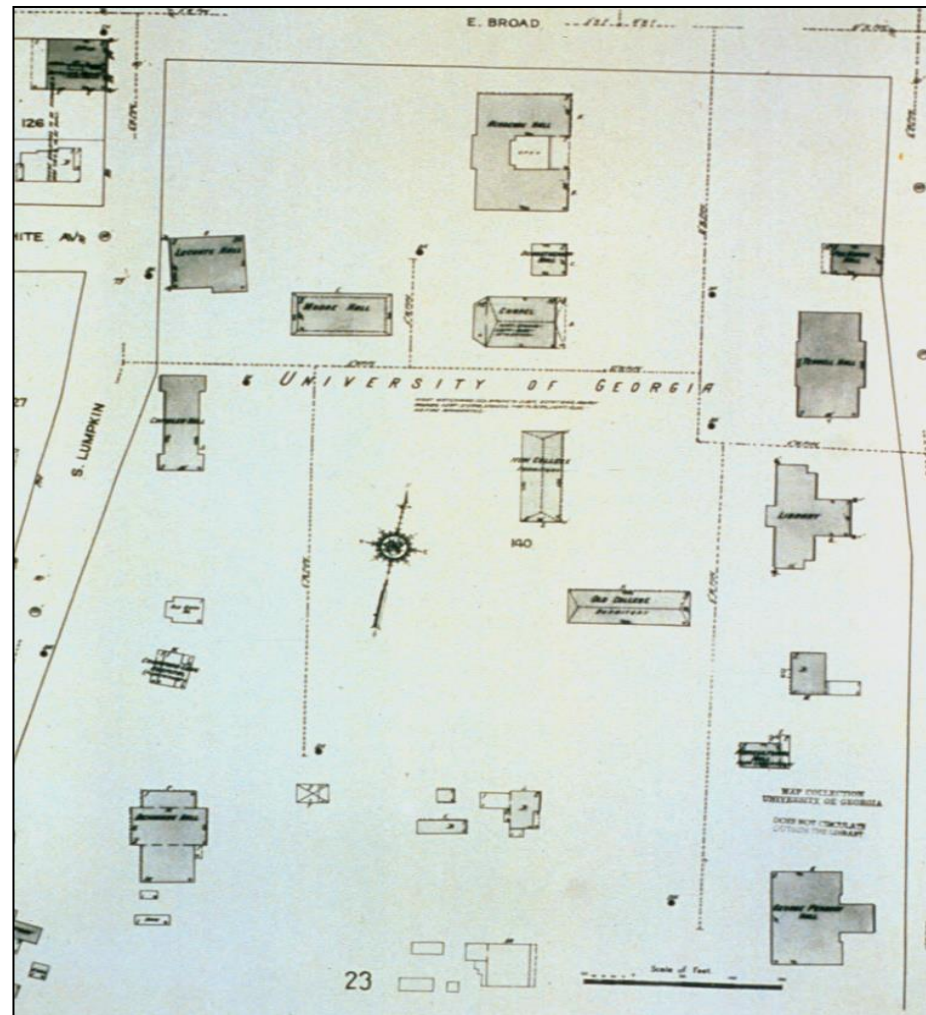
WILLIAM AND MARY COLLEGE, WILLIAMSBURG, VA.



College of William and Mary 1693

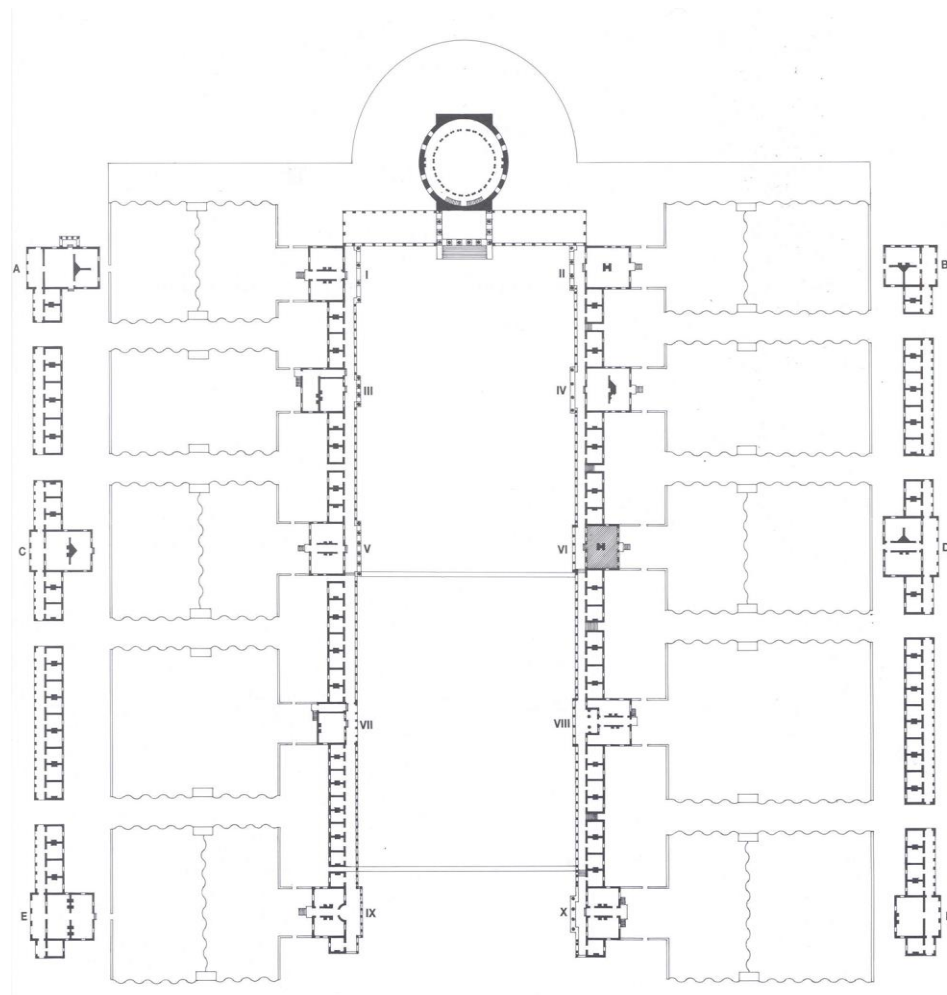
GREENING OF THE CAMPUS

ORIGINS



Nineteenth century views of UGA North Campus

ORIGINS

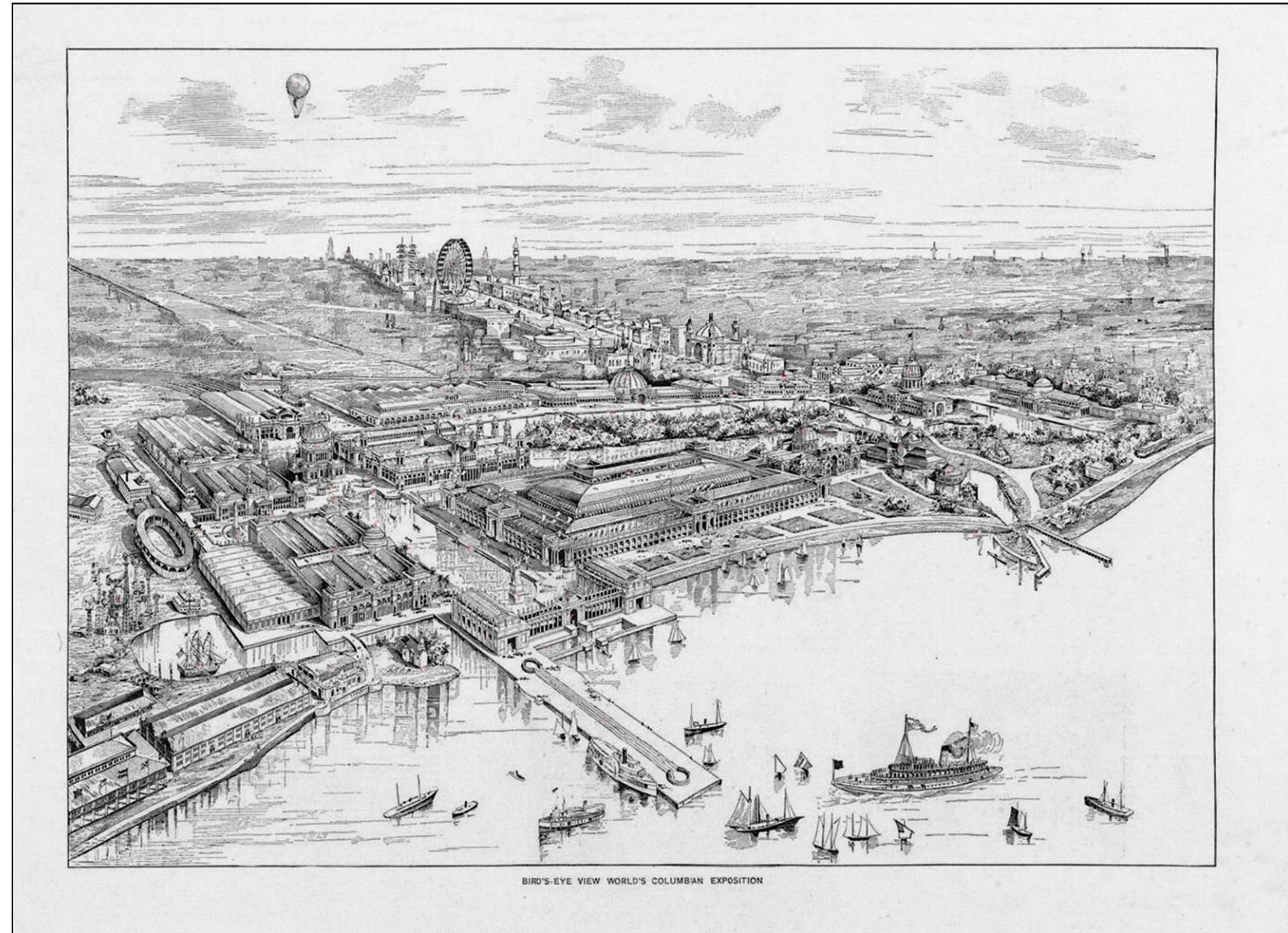
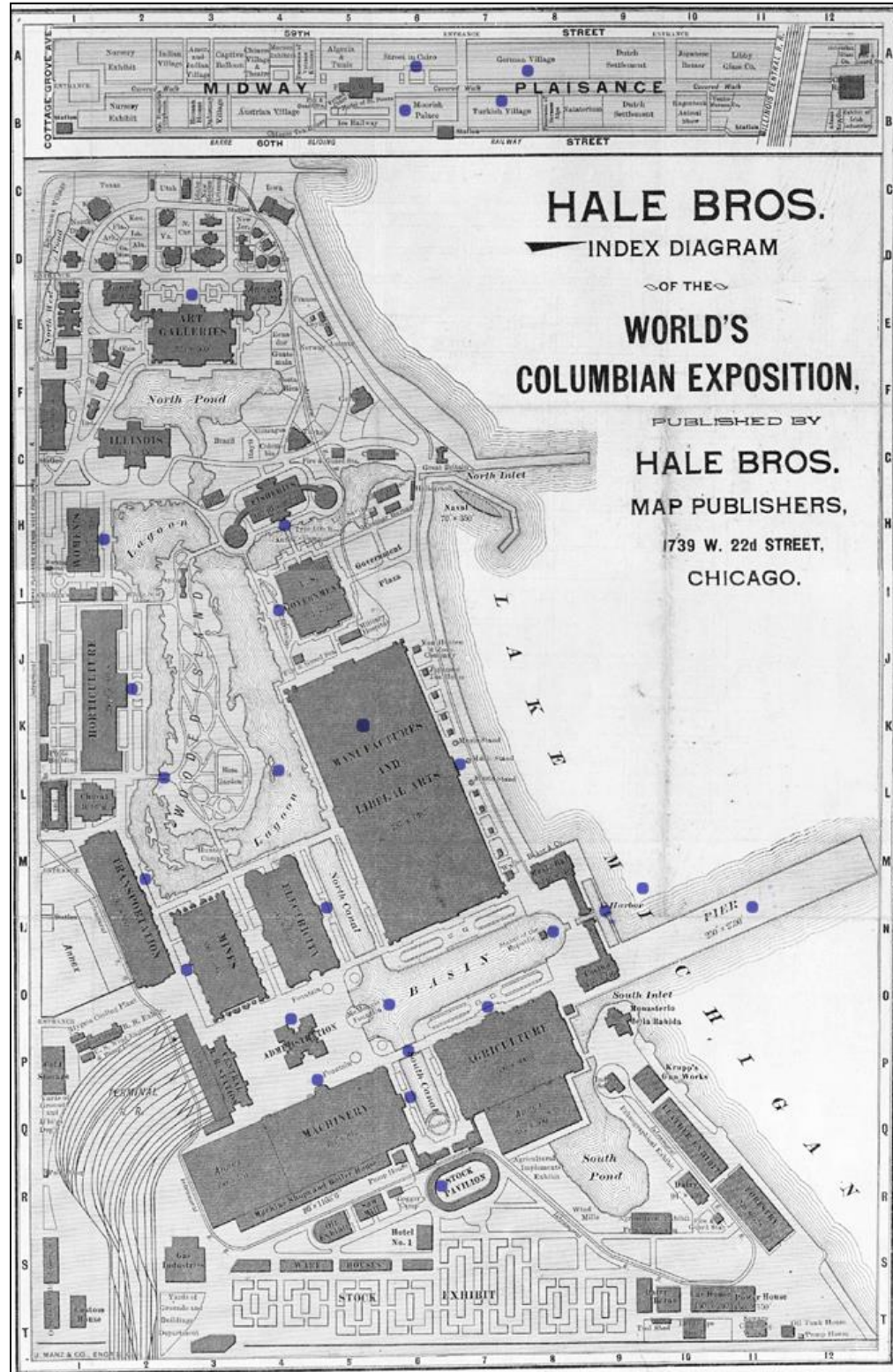


University of Virginia original plan



The Lawn at University of Virginia

ORIGINS



1893 Columbian Exposition site plan & perspective

ORIGINS



1893 Columbian Exposition Grand Basin

ORIGINS



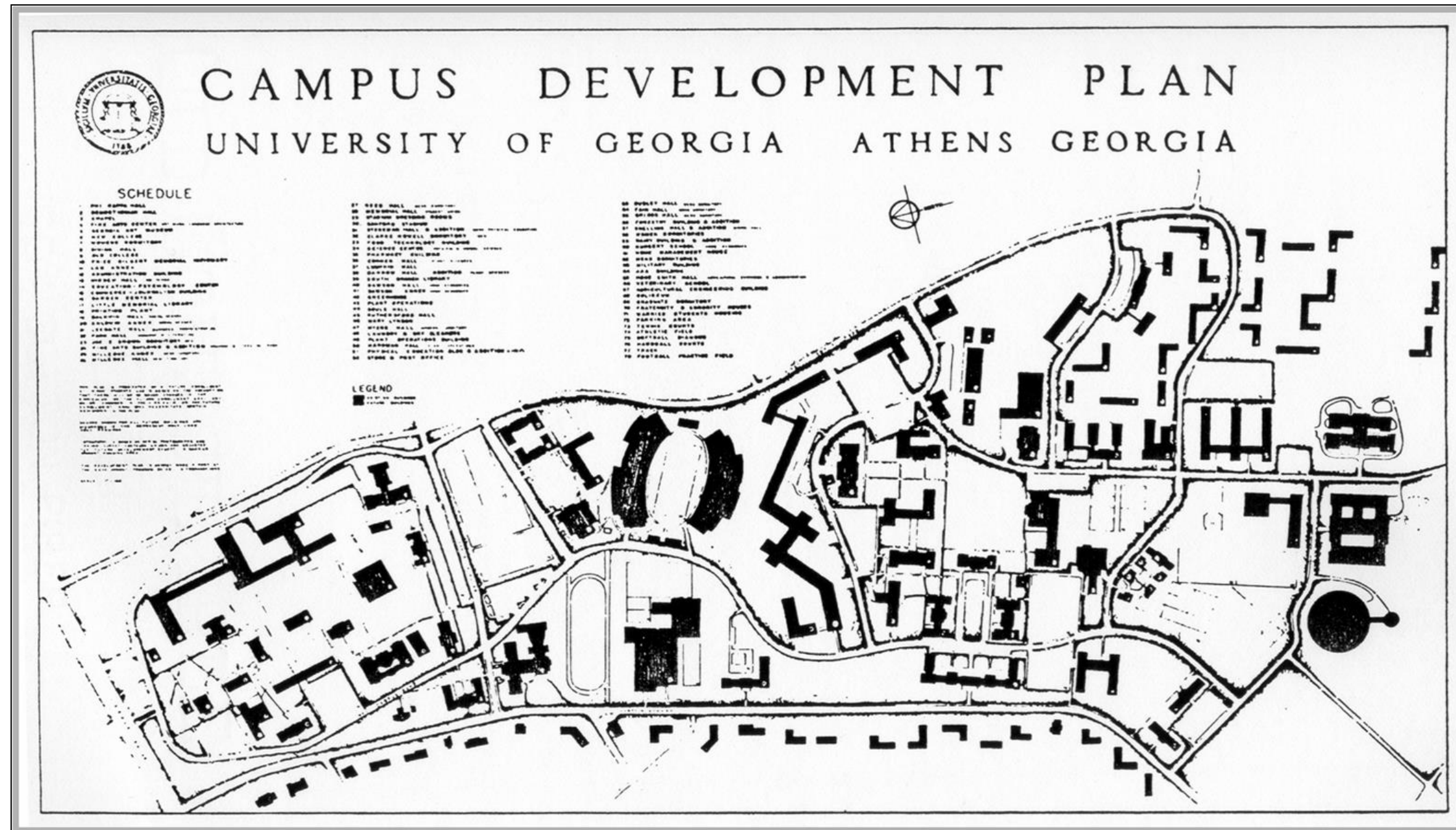
*1893 Columbian Exposition
North Canal*

ORIGINS



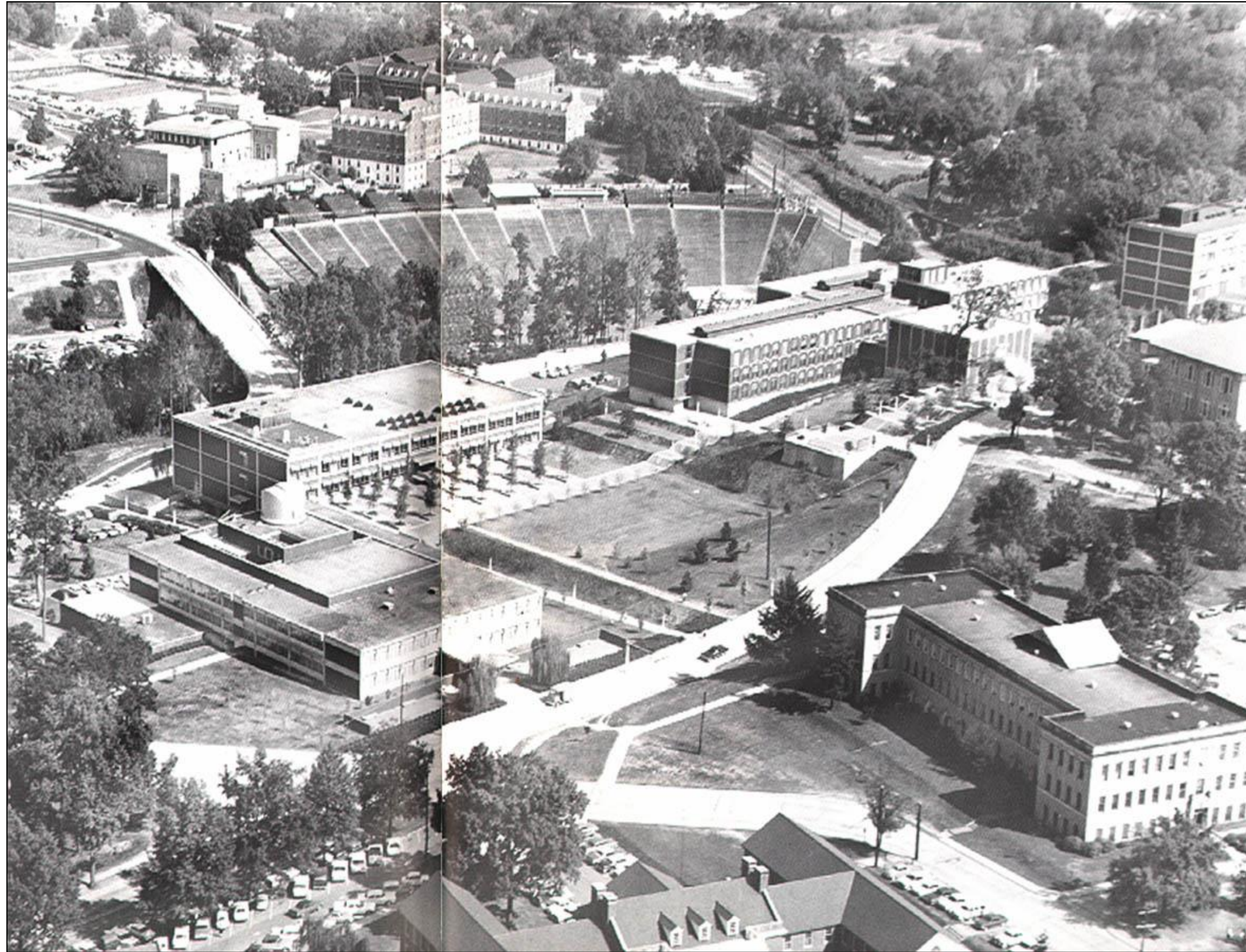
1906 Charles Leavitt Plan

20TH CENTURY DEVELOPMENT



1953 Plan

MODERNIST INFLUENCES



The Science Complexes

INTRODUCTION

South Campus Precinct



INTRODUCTION



-UGA South Campus 1900s

COMMUTER CAMPUS



*-UGA South Campus
- UGA Archives*

COMMUTER CAMPUS



The commuter campus
- UGA Archives

Prior to the 1998 master plan, the physical form of campus had supported a campus culture of parking adjacent to buildings, with a minimum walk from parking space to front door

Why can't the rest of campus look like this?



Instead of like this?

Guiding principles for the plan

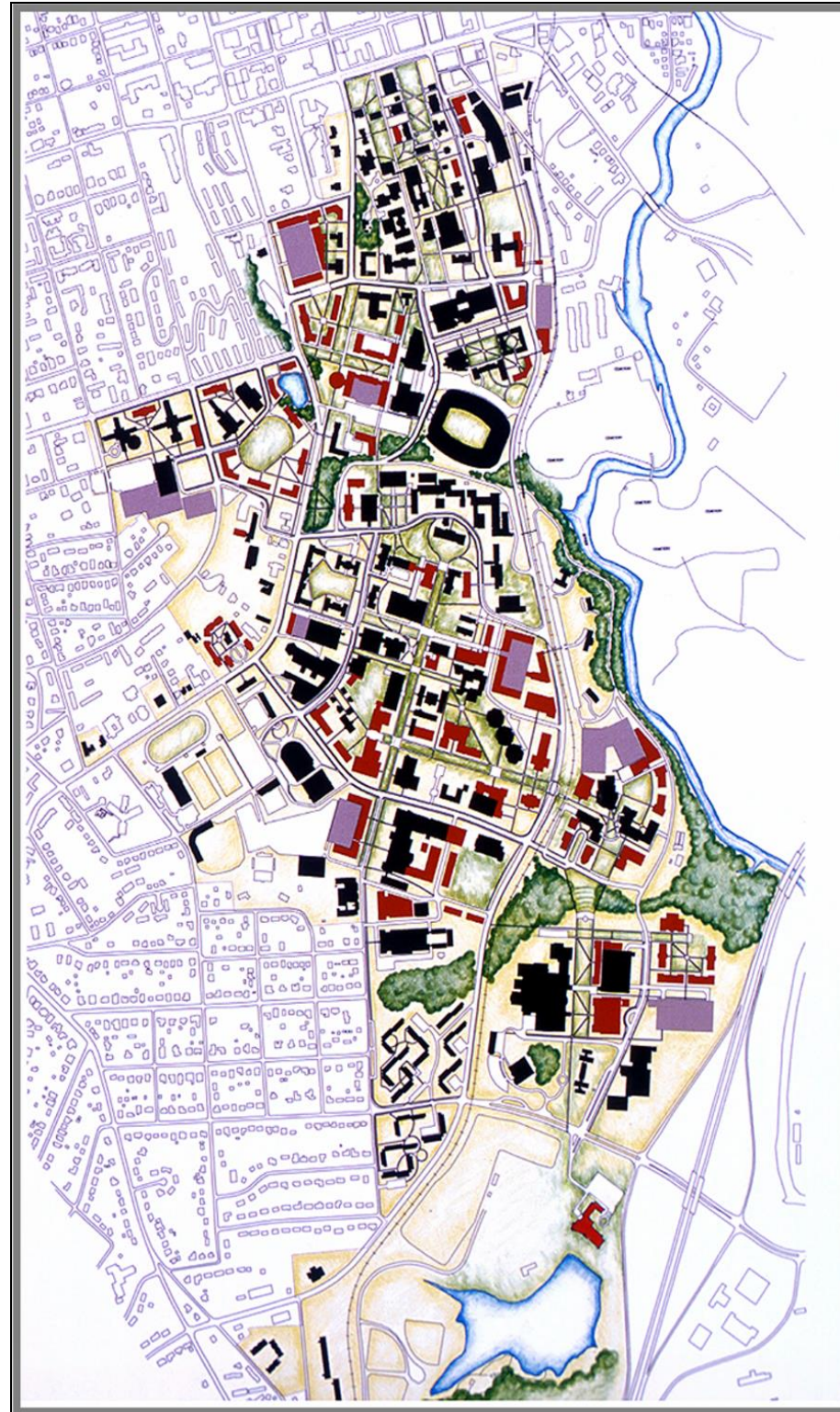
1. Create the optimal student environment.
2. Extend the characteristics of North Campus.
3. Develop a connected campus.
4. Define and provide for current and future facility needs.
5. Provide for academic and student needs on contiguous land.
6. Develop comprehensive solutions to traffic, parking and infrastructure.
7. Protect and enhance natural resources.
8. Participate in regional coordination.
9. Prepare for sustained implementation.

“We can try to create a physical atmosphere that is conducive to learning and contemplation, we should focus on a process which gives open space equal footing with building construction.”

- Dexter Adams

MASTER PLAN FOR THE 21ST CENTURY

*“CREATE THE OPTIMAL
STUDENT ENVIRONMENT”*



*“DEVELOP A
CONNECTED CAMPUS”*

*“EXTEND THE CHARACTERISTICS
OF NORTH CAMPUS”*

1997 master plan

D.W. BROOKS DRIVE

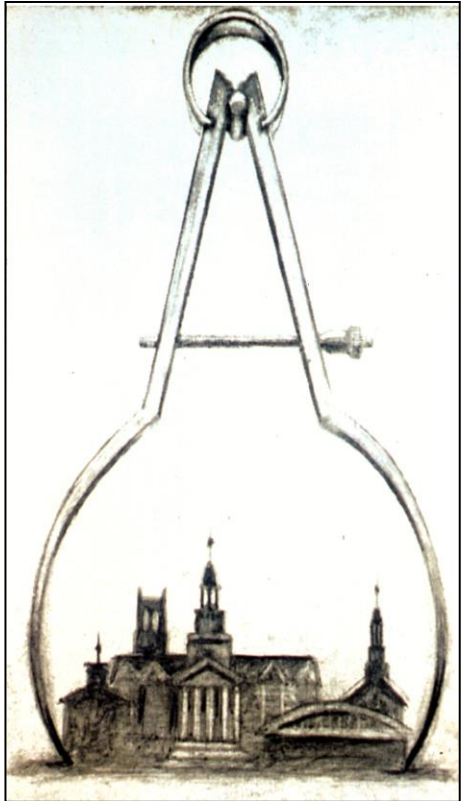


D.W. Brooks Drive

D.W. BROOKS DRIVE



D.W. Brooks Drive



PLANNING & DESIGN

OFFICE OF UNIVERSITY ARCHITECTS - CONCEPT & DESIGN

ENVIRONMENTAL DESIGN SUMMER DESIGN STUDIO - INVENTORY & ANALYSIS

LIFE SAFETY PROFESSIONALS - EMERGENCY VEHICLE ACCESS

ATHENS CLARKE COUNTY STREETS & PUBLIC WORKS DEPARTMENT - ROAD CLOSURE

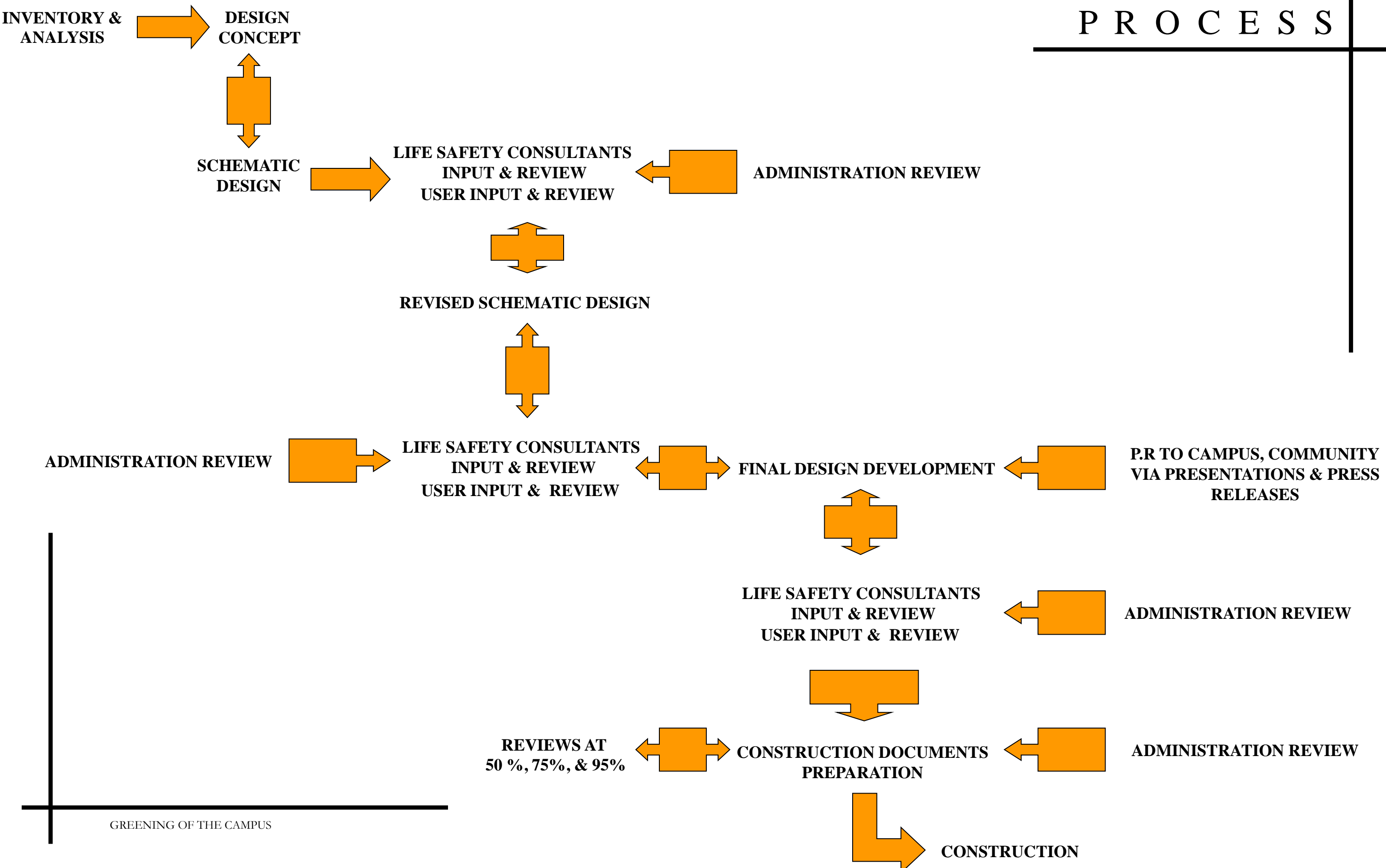
PROFESSIONAL CONSULTANTS - TRAFFIC, INFRASTRUCTURE, C. D. PREPARATION

UGA GROUNDS, FACULTY / STAFF - USER INPUT & REVIEW

UGA ADMINISTRATION – SUPPORT & REVIEW

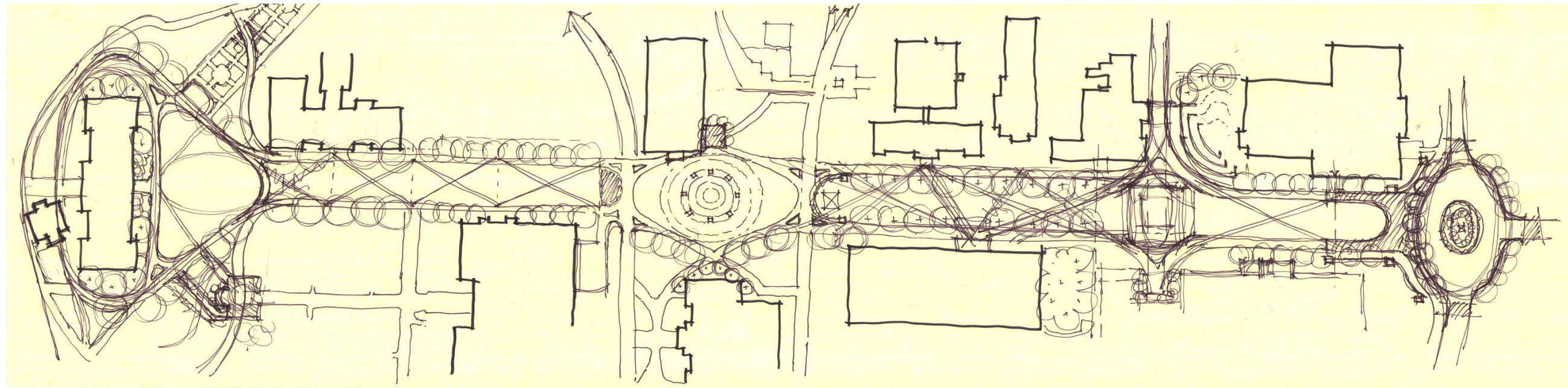


P R O C E S S



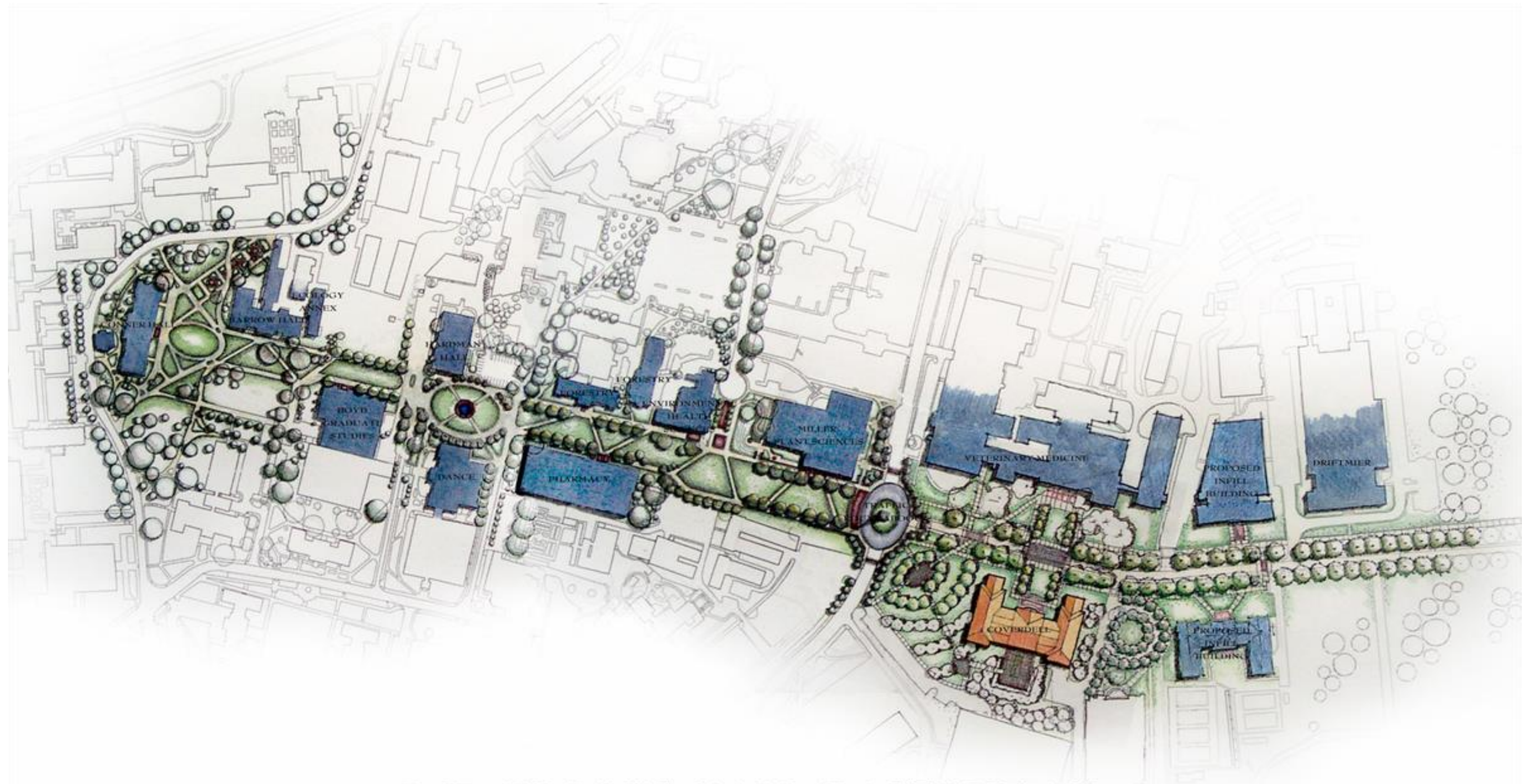
GREENING OF THE CAMPUS

D.W. BROOKS MALL



D.W. Brooks Mall Concept plan

D.W. BROOKS MALL



D.W. BROOKS MALL MASTERPLAN



The University of Georgia
Office of the University Architects for Facilities Planning

D.W. Brooks Mall Illustrative master plan

DESIGN AESTHETICS



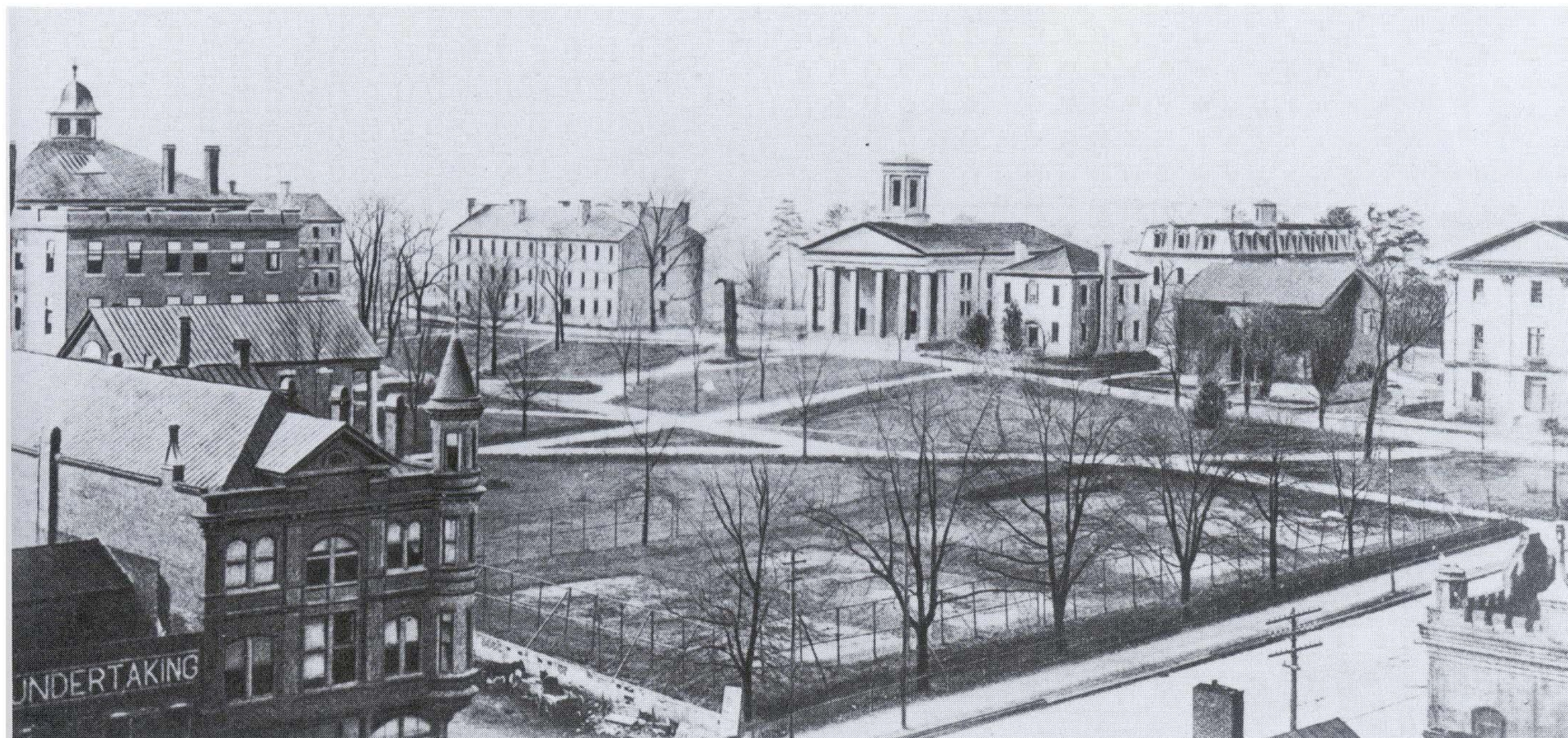
Demolition of Asphalt

DESIGN AESTHETICS



Construction

NORTH CAMPUS MODEL



View of North Campus

NORTH CAMPUS MODEL



Views of North Campus

DESIGN AESTHETICS

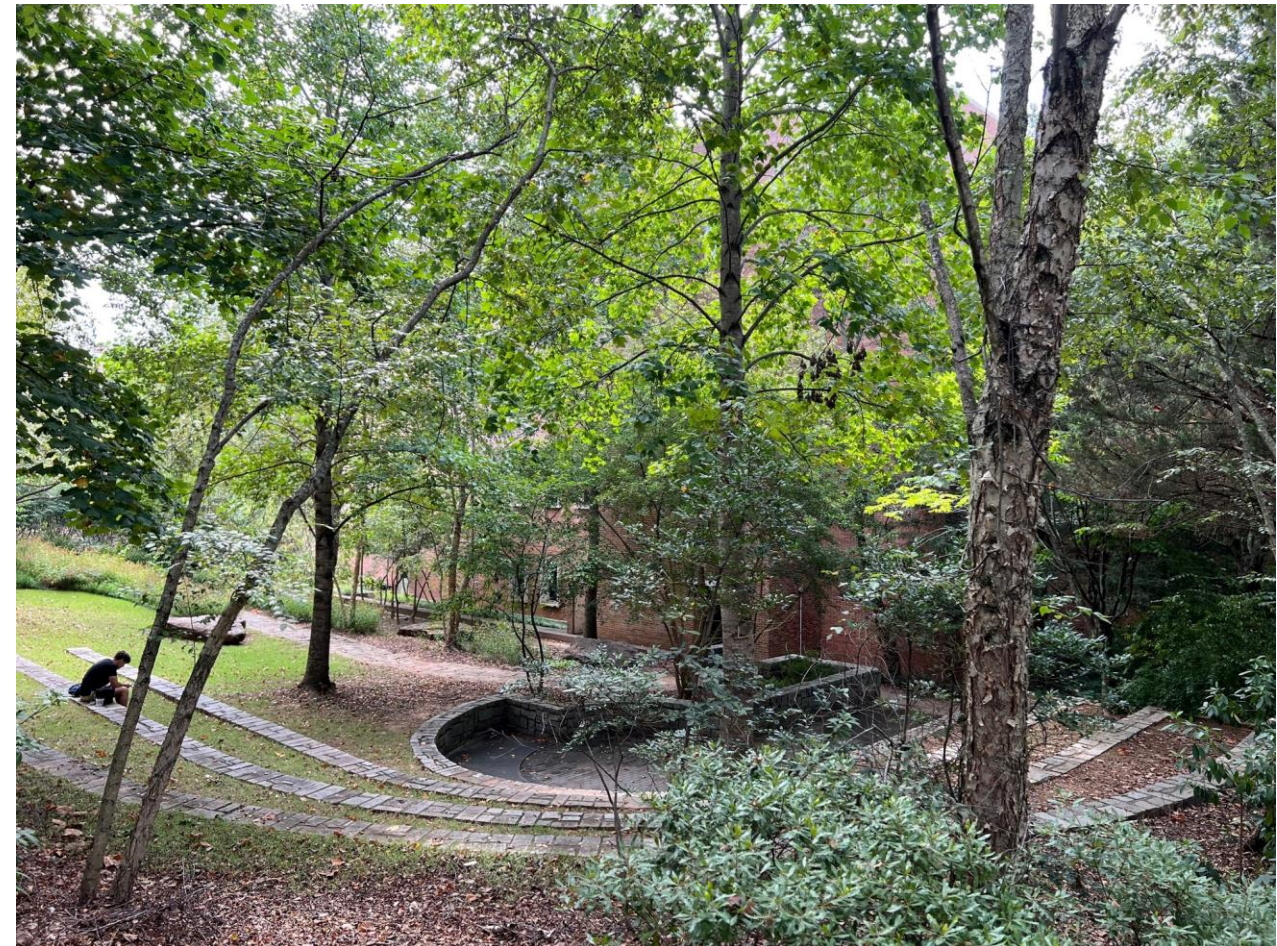


University of Georgia North Campus



D.W. Brooks Mall, Phase II

DESIGN AESTHETICS



Jaworski Amphitheater

INFRASTRUCTURE



Infrastructure network



Communication vault

COMPARING CAMPUSES



D.W. Brooks Drive, looking north



D.W. Brooks Mall, looking south

COMPARING CAMPUSES



D.W. Brooks Mall, Phase II Construction



D.W. Brooks Mall, Phase II

COMPARING CAMPUSES



D.W. Brooks Drive, Forestry Building



D.W. Brooks Mall, Phase II

COMPARING CAMPUSES

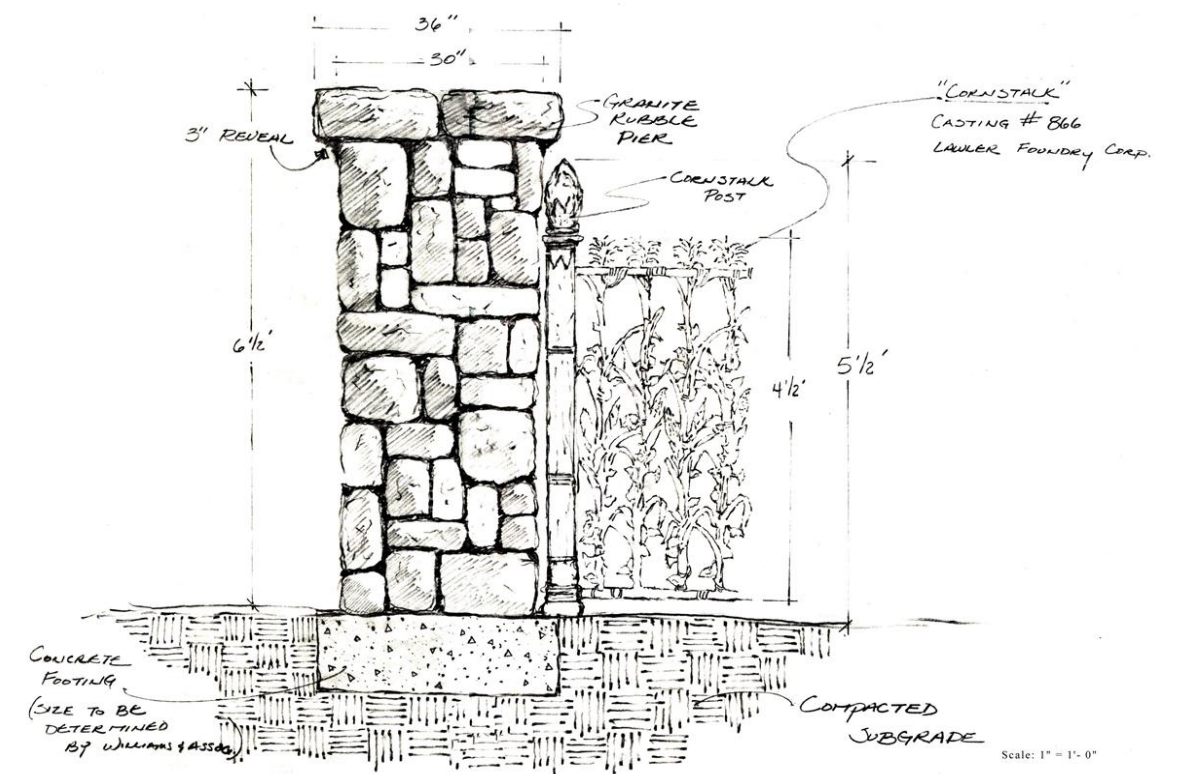


D.W. Brooks Drive, looking north
- UGA Archives



D.W. Brooks Mall, looking north

COMPARING CAMPUSES



Cornstalk fence construction detail

D.W. BROOKS MALL



Campus Arboretum Memorial

D.W. BROOKS MALL



D.W. Brooks Mall, looking south





D.W. Brooks Pedestrian Mall